



# AIRPORT ROAD REHABILITATION

## County-City Joint Project

### Larkin Twp, Lincoln Twp, and the City of Midland

#### 2018 CONSTRUCTION PROJECT INFORMATION

Midland County Road Commission  
2334 North Meridian Road  
Sanford, Michigan 48657

www.midlandroads.com  
facebook.com/MidlandRoads  
twitter.com/MidlandCRC

Information Contact  
Russell Inman, Design Engineer

e russ@midlandroads.com  
p (989) 687-9060

Project Limits:  
*Hicks Road to Perrine Road (1.18 Miles)*

Construction timeline:  
*April 30, 2018 - June 29, 2018*

Total Estimated Project Cost:  
**\$389,030.40**

Midland County Cost: **\$70,218.26**

City of Midland Cost: **\$78,812.14**

Midland County Road Commission (MCRC) and the City of Midland have joined forces for a rehabilitation project on Airport Road from Hicks Road to Perrine Road. The roadway condition has deteriorated due to increased commercial and residential traffic as the area has continued to develop.

Airport Road was reclassified and upgraded from a local road to a County Primary/City Major road designation in June 2015. MDOT approved this change after a joint request was submitted from both MCRC and the City of Midland.

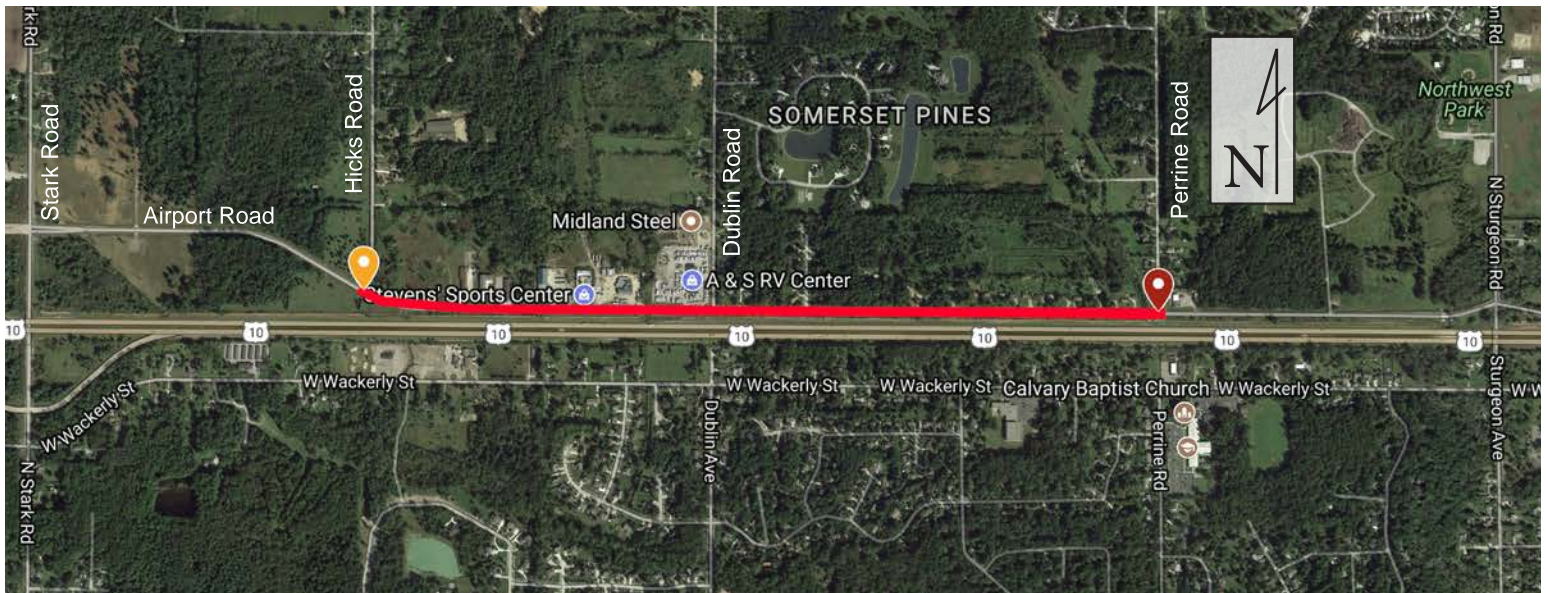
The project utilizes Federal Urban STP funds, which are designated for road construction located within the Midland urbanized area, and local matching funds from both entities. The local matching funds have been provided by the voter approved county road millages.

Roadway improvements will consist of the following:

- Upgrading to all-season roadway
- Increasing roadway width
- Increasing roadway base strength
- New 3' paved shoulders
- New 3' gravel shoulders
- Drainage improvements
- Room for non-motorized use
- New 4" thick asphalt road surface

**\*\*One lane of traffic will be maintained during project construction\*\***

*Project plans are available for review online and at the Midland County Road Commission office in Sanford, MI.*



Project Information and Updates can be found at: <http://www.midlandroads.com/airport2018>