



GORDONVILLE ROAD CORRIDOR SAFETY IMPROVEMENTS

Homer and Mt. Haley Townships, Midland County

2018 CONSTRUCTION PROJECT INFORMATION

Midland County Road Commission
2334 North Meridian Road
Sanford, Michigan 48657

www.midlandroads.com
facebook.com/MidlandRoads
twitter.com/MidlandCRC

Information Contact
Russell Inman, Design Engineer

e russ@midlandroads.com
p (989) 687-9060

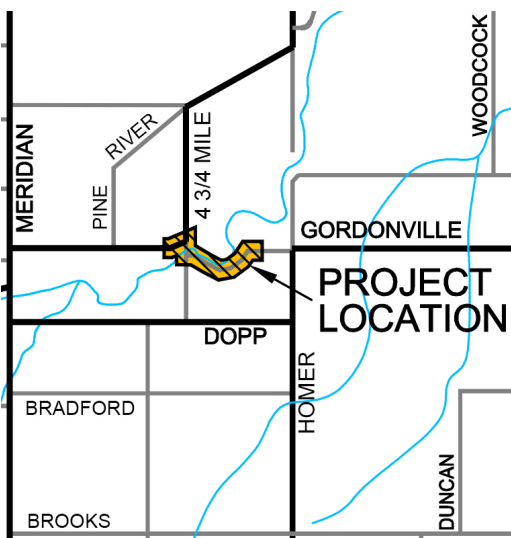
Project Limits:
West of 4 ¾ Mile Rd. to 0.50 miles east

Construction timeline:
April 2018 - July 2018

Total Estimated Project Cost:
\$568,400.00

Midland County Cost (10%):
\$56,800.00

Location Map

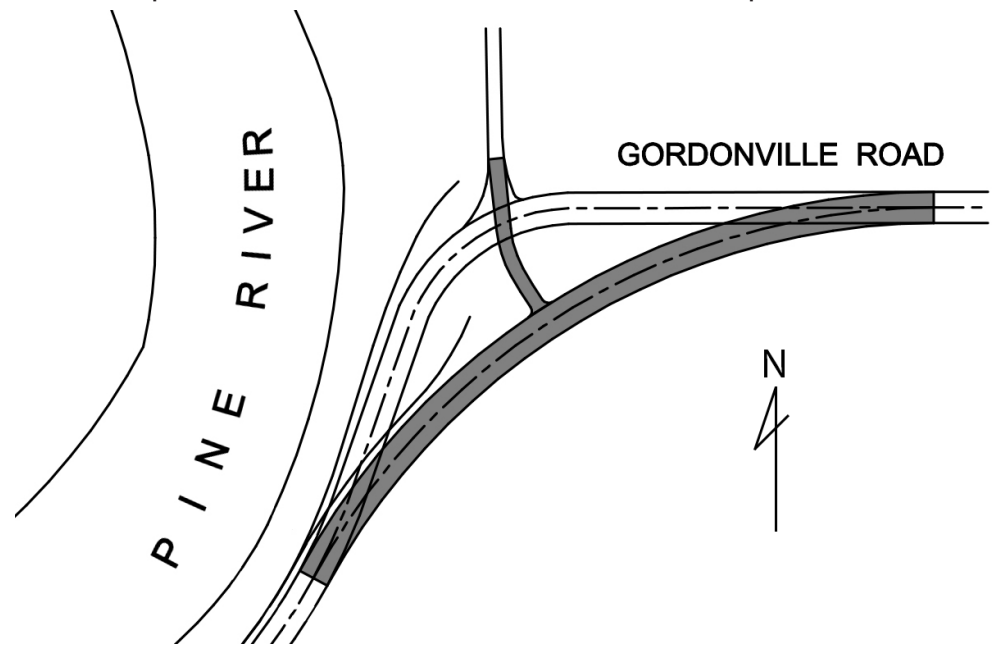


In August 2015, Midland County Road Commission (MCRC) and Michigan Department of Transportation (MDOT) personnel conducted a Local Safety Initiative Review of roadway corridors and intersections within Midland County. The review identified the top 10 corridors and intersections where vehicle crashes are occurring.

The Gordonville Road corridor was highlighted in the review as having a high crash history. MCRC personnel applied for and received a \$511,600.00 (90%) High Risk Rural Road (HRRR) Safety Program Grant to reduce crashes that have been occurring along this corridor. There are several curves, a bridge and two intersections located within this portion of Gordonville Road. The roadway features sharp curves and steep slopes as it travels adjacent to the Chippewa River. The intersections at 4 ¾ Mile Road require geometric improvements to allow for all types of vehicles to properly navigate them.

The project will reduce crashes by providing the following:

- Road Alignment Correction
- Intersection Improvements
- Road curve flattening
- Superelevation Correction
- Curb and Gutter
- Managed Drainage
- Paved Shoulders
- Guardrail Replacement



Project plans are available for review at Homer and Mt. Haley Townships and at the Midland County Road Commission office in Sanford, MI.