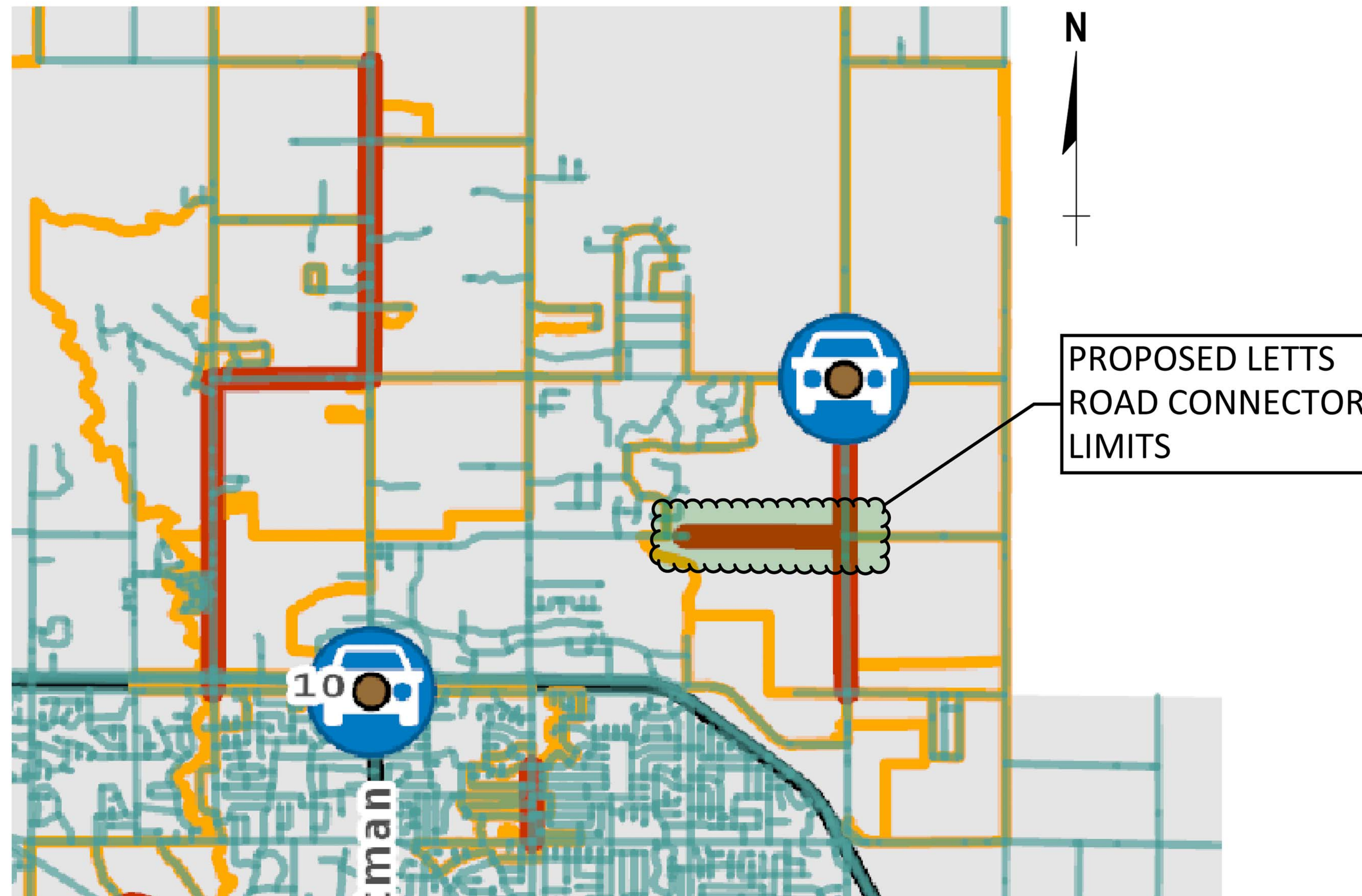


MIDLAND AREA TRANSPORTATION STUDY

TOWARDS 2045 LONG RANGE TRANSPORTATION PLAN

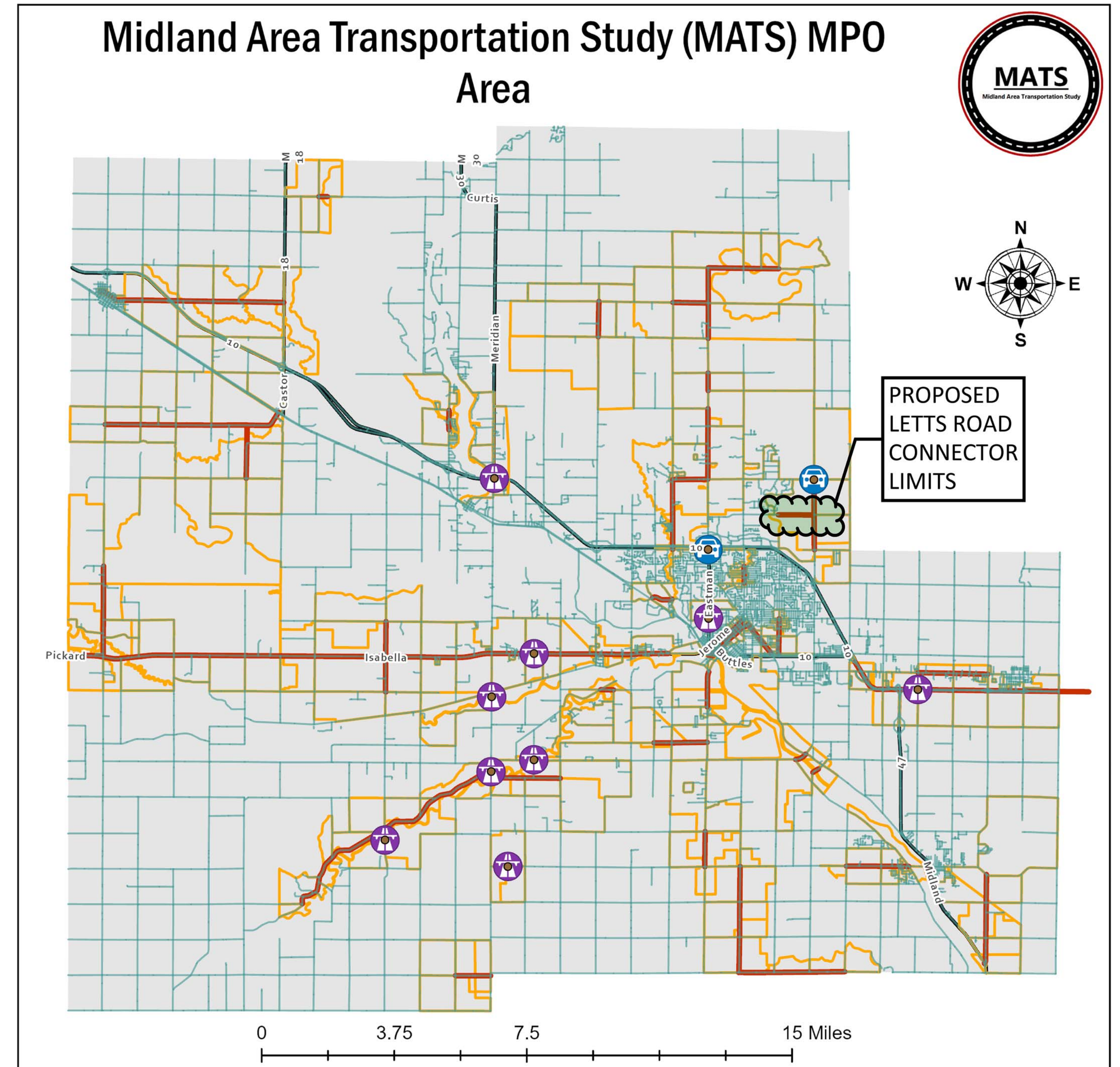


Individual Evaluation of Modeled Projects

A detailed list of desired network enhancements that was modeled is shown in Exhibit 31 of the 2045 Long Range Plan. This list is the culmination of a process of extensive dialog with local agencies within the MATS area. It emphasized projects which were both widely sought after, and feasible to complete in the model time-frame.

A Commerce Drive and Letts extension provides connectivity north of the Mall area. This will allow residents to travel east of Jefferson and west of Eastman if they are not traveling to the mall area. The model shows reduction in capacity utilization on the Parallel road Monroe and some reduction on Eastman and Jefferson.

Each of the projects listed in the 2045 Long Range Plan provide a benefit to the overall MATS area, either through enhanced connectivity or through traffic pattern adjustments for better system-wide capacity utilization and operations.



- Major Roads
- Road Projects
- ⦿ Bridge Projects
- ⦿ Road Projects
- ⦿ Impacted Census Blocks

Created by Midland County GIS
November 2021



ROWE PROFESSIONAL
SERVICES COMPANY

